



The Bungalow Fuchsia Gardens,, Mount Rule, Douglas, Isle of Man, IM4 4HT
Asking Price £550,000

- Secluded detached bungalow in a peaceful setting
- Spacious lounge with glass doors opening to a decked terrace overlooking the garden
- Set on just under half an acre of mature gardens
- Kitchen with breakfast bar, dining room and separate utility room
- Three bedrooms and two bathrooms
- Potential planning permission for a single-storey extension to create a 5/6-bedroom home with master suite



The Bungalow Fuchsia Gardens,, Mount Rule, Douglas, Isle of Man, IM4 4HT

Tucked away in a lovely private setting, The Bungalow sits on a generous plot of just under half an acre, framed by mature lawns, trees and established borders. This is a peaceful, rural home that blends everyday practicality with a calm, countryside feel—within easy reach of Douglas.

A welcoming hall leads to a cosy lounge where glazed doors open directly onto a decked terrace that overlooks the gardens—perfect for morning coffee, weekend reading or relaxed evening entertaining. The dining room flows naturally towards a well-planned kitchen with a breakfast bar, generous worktops and space for social cooking. A separate utility room keeps laundry and boots out of sight, adding valuable storage and day-to-day convenience.

Accommodation includes three comfortable bedrooms served by two bathrooms, each room enjoying a leafy outlook that reinforces the home's connection to its setting. The layout feels practical and balanced, with natural light and garden views at its heart.

Outside, the grounds provide excellent privacy and plenty of usable space. The wide driveway delivers off-road parking and substantial workshop-come-garage offers superb hobby space, storage for garden machinery, or scope for future ideas (subject to the usual consents). The decked terrace steps down to level lawn—ideal for children to play, pets to roam or simply to enjoy the birdsong.

Importantly, the property benefits from potential planning permission for a single-storey extension to create a 5/6-bedroom home incorporating a master suite. This gives buyers the flexibility to enjoy the bungalow as it is today, while holding a clear pathway to expand when the time is right.

All told, The Bungalow at Fuchsia Gardens is a rare Mount Rule opportunity: private, practical and wonderfully green—made even more appealing by its future potential, strong parking provision and substantial outbuilding. A relaxed Island lifestyle, ready to enjoy.







The Bungalow Fuchsia Gardens,, Mount Rule, Douglas, Isle of Man, IM4 4HT







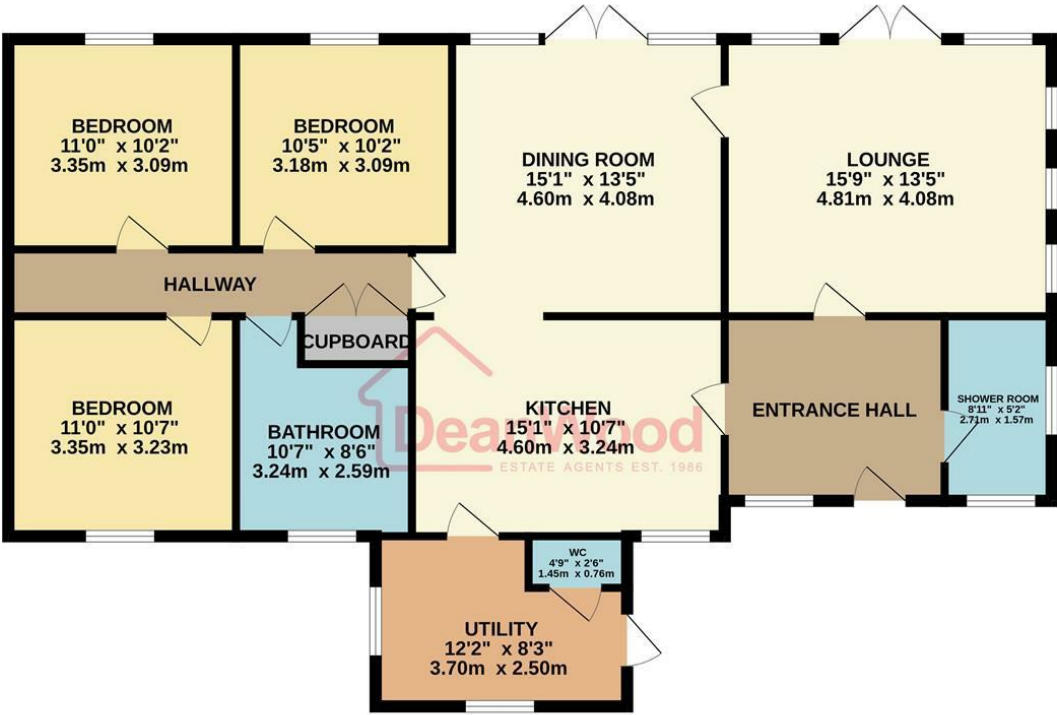
The Bungalow Fuchsia Gardens,, Mount Rule, Douglas, Isle of Man, IM4 4HT







GROUND FLOOR
1280 sq.ft. (118.9 sq.m.) approx.



TOTAL FLOOR AREA : 1280 sq.ft. (118.9 sq.m.) approx.
Not to scale for identification purposes only
Made with Metropix ©2025



DOUGLAS
37 VICTORIA STREET
DOUGLAS
ISLE OF MAN IM1 2LF
T 01624 620606
F 01624 677363
E info@deanwood.co.im

CASTLETOWN
COMPTON HOUSE
9 CASTLE STREET CASTLETOWN
ISLE OF MAN IM9 1LF
T 01624 825995
F 01624 825996
E castletown@deanwood.co.im

RAMSEY
LEZAYRE HOUSE
87 PARLIAMENT STREET
RAMSEY ISLE OF MAN IM8 1AQ
T 01624 816111
F 01624 816588
E ramsey@deanwood.co.im

These particulars are for information purposes only. They do not constitute or form any contract nor should any statement contained herein be relied upon as a representation of fact. Neither the vendor nor DeanWood Agencies Limited ('the firm'), nor any officer or employee of the firm accept liability or responsibility for any statement contained herein. The vendor does not by these particulars, nor does the firm, nor does any officer or any employee of the firm have any authority to make or give any representation or warranty whatsoever as regards the property or otherwise. It is the sole responsibility of any person interested in the property described in these particulars to make all proper enquiries and searches to verify the description of the property and all other particulars herein.

FOR MORE PROPERTIES VISIT OUR WEBSITE @ **deanwood.im**